

**14 Successful Projects,**

**500+ Units**

In Bahria Town Lahore



# **THE GRAND LIFESTYLE**

**PREMIUM SERVICE APARTMENTS**

**GRAND 15**



# **A MODERN ELEVATION** **BEYOND THE ORDINARY**



# دبي Downtown AND RAYA CONCEPT

An Elevation  
Beyond the Ordinary



**FACING**  
**FOUNTAINS, PARK &**  
**EIFFEL TOWER**









ROLEX

Lee Sizhe

MR. JOHN

Lee Sizhe

ROLEX

PANDORA



 **ROLEX**

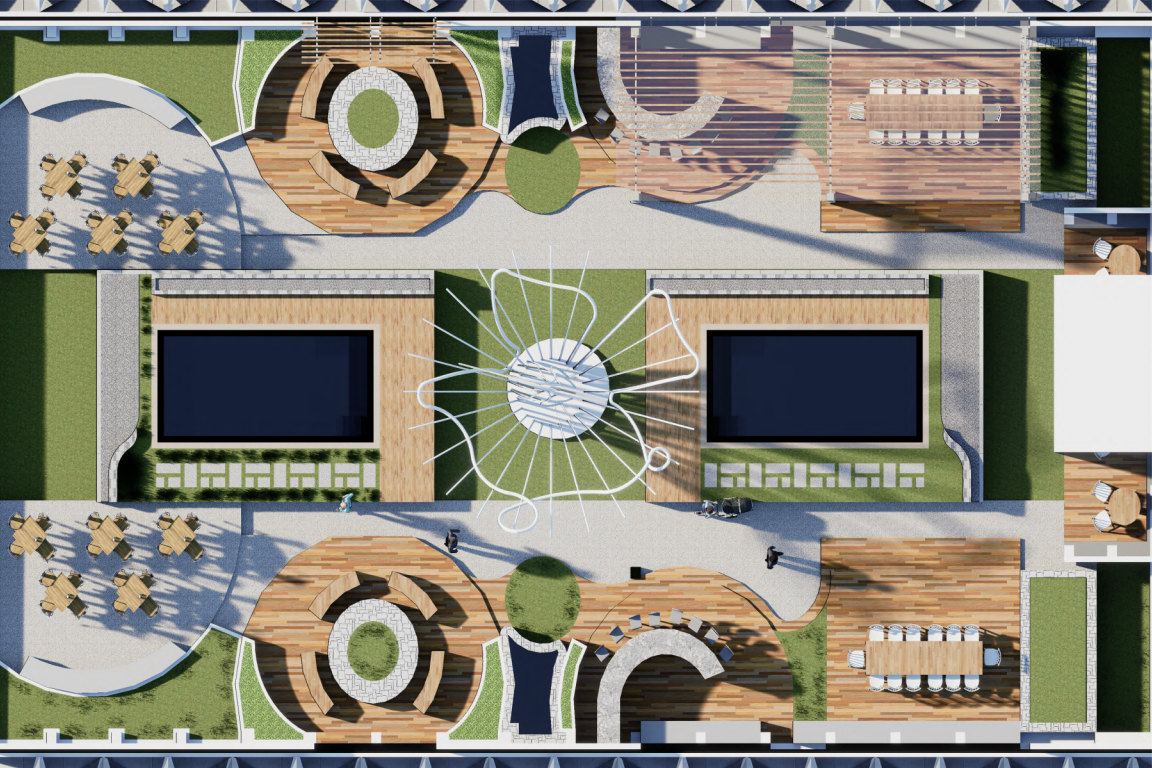
 **Lee Sizhe**

MR. JOHN

 **Lee Sizhe**

 **ROLEX**





# Premium Amenities





**Swimming  
Pool**



**Gym &  
Fitness Centre**



**Gaming  
Zone**



**Sauna Spa**



**Grocery  
Services**



**Laundry  
Services**



**High Speed  
Elevators**



**Private  
Terraces**



**Rooftop  
Garden**



**Room Keeping  
& Cleaning**



**Daycare  
Centre**



**Community  
Area**



**24/7  
Reception**



**24/7  
Electricity**



**24/7 CCTV  
Monitoring**



**24/7  
Internet**

**1-Bed**  
**Service Apartments**  
**with Private Terrace**





Luxury Apartment



TV Lounge



Kitchen



Bath



# 1 Bed Terrace

Park & Eiffel View

# 1-Bed

*Luxury Apartments*  
Facing Fountains, Park & Eiffel Tower



**LOUNGE/KITCHEN**  
12'-3" X 10'-7 1/2"

**BED ROOM**  
12'-3" X 10'-0"

**BATH**  
7'-0" X 5'-0"



**TERRACE**  
4'-4 1/2" X 5'-9"



**LIMITED  
TIME  
OFFER**

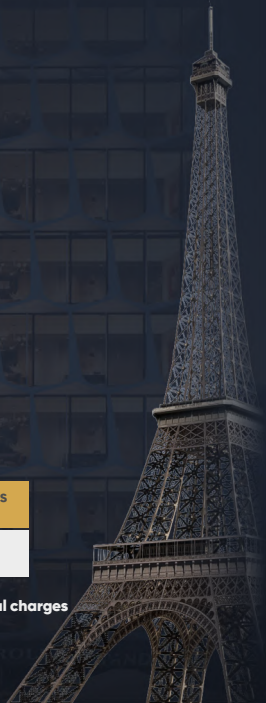
**Pre-Launch Offer**

~~17,000~~ Rate Sqft  
**16,000** Rate Sqft

### **1-Bed Apartment Payment Plan**

Area	Total Price	20% Down Payment	20% Confirmation	Installments (36)
500	8,000,000	1,600,000	1,600,000	133,333

**Note: Corner, Facing Eiffel, Facing Park & Fountains units come with a premium of 10% additional charges**



**2-Bed**  
**Service Apartments**  
**with Private Terrace**





Luxury Apartment

**Room 1**



Luxury Apartment

Room 2



TV Lounge



Kitchen

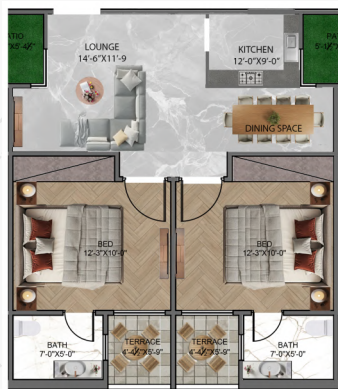


**2 BED** Terrace  
Park & Eiffel View

---

# 2-Bed

*Luxury Apartments*  
Facing Fountains, Park & Eiffel Tower





LIMITED  
TIME  
OFFER

Pre-Launch Offer

~~17,000~~ Rate Sqft  
**16,000** Rate Sqft

## 2-Bed Apartment Payment Plan

Area	Total Price	20% Down Payment	20% Confirmation	Installments (36)
1,000	16,000,000	3,200,000	3,200,000	266,667

Note: Corner, Facing Eiffel, Facing Park & Fountains units come with a premium of 10% additional charges

**3-Bed**  
**Service Apartments**  
**with Private Terrace**







TV Lounge



Kitchen



**3 BED** Terrace  
Park & Eiffel View

# 3-Bed

*Luxury Apartments*  
Facing Fountains, Park & Eiffel Tower





LIMITED  
TIME  
OFFER

Pre-Launch Offer

~~17,000~~ Rate Sqft  
**16,000** Rate Sqft

### 3-Bed Apartment Payment Plan

Area	Total Price	20% Down Payment	20% Confirmation	Installments (36)
1,500	24,000,000	4,800,000	4,800,000	400,000

Note: Corner, Facing Eiffel, Facing Park & Fountains units come with a premium of 10% additional charges



# Limited Inventory Available

**Secure Your Spot Now!**

A Project of



**LANDMARK**  
Developers

We Commit, **We Deliver**

